

Waterway Park

Phase 1

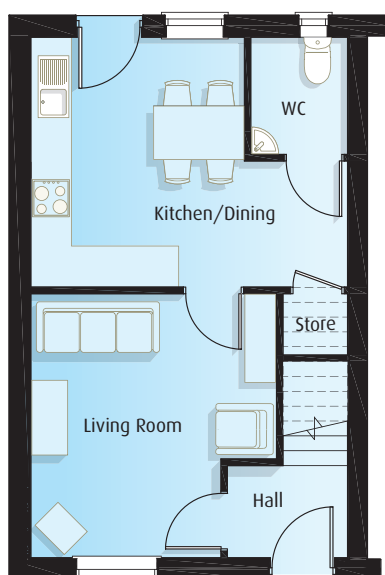


DISCLAIMER

Helena Living maintains a policy of continuous improvement. As a result, all information including internal layouts, images, build materials and specification is included as a guide only and is correct at the time of going to press. The company reserves the right to alter any of the information included at any time as it sees fit and without notice. This does not constitute or form any part of a contract or sale. Please contact Helena Living for the most up to date information on properties available at this development.

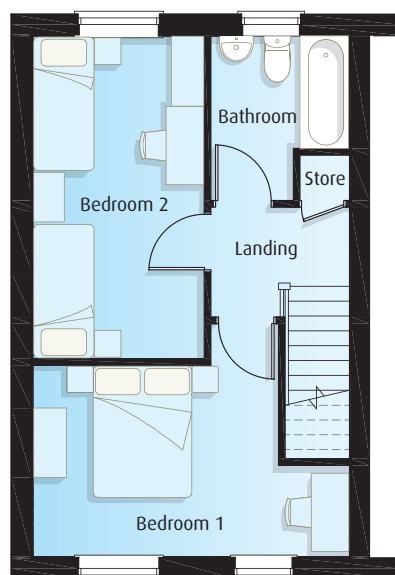


The Avon • Plots 77, 78 & 79



Ground Floor

Living Room	3.715m x 4.000m
Kitchen/Dining Room	4.795m x 3.785m
WC	1.460m x 1.775m



First Floor

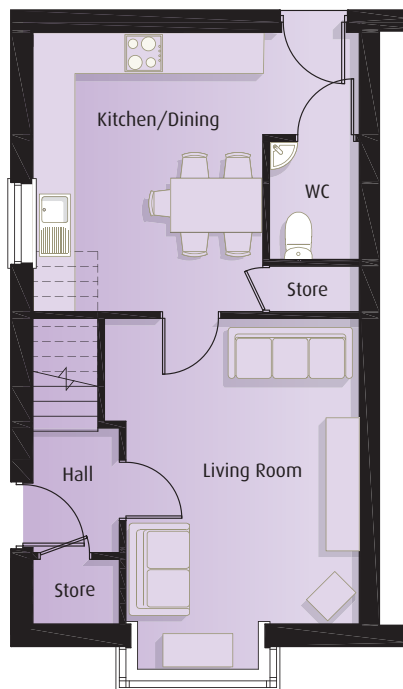
Bedroom 1	4.795m x 2.900m
Bedroom 2	2.595m x 4.885m
Bathroom	2.100m x 2.490m

DISCLAIMER

Helena Living maintains a policy of continuous improvement. As a result, all information including internal layouts, images, build materials and specification is included as a guide only and is correct at the time of going to press. The company reserves the right to alter any of the information included at any time as it sees fit and without notice. This does not constitute or form any part of a contract or sale. Please contact Helena Living for the most up to date information on properties available at this development.

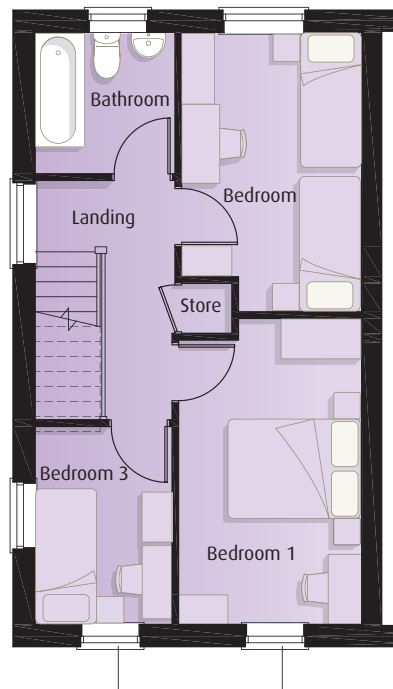


The Eden • Plot 53



Ground Floor

Living Room	3.830m x 4.600m
Kitchen/Dining Room	3.455m x 4.200m
WC	1.350m x 1.775m



First Floor

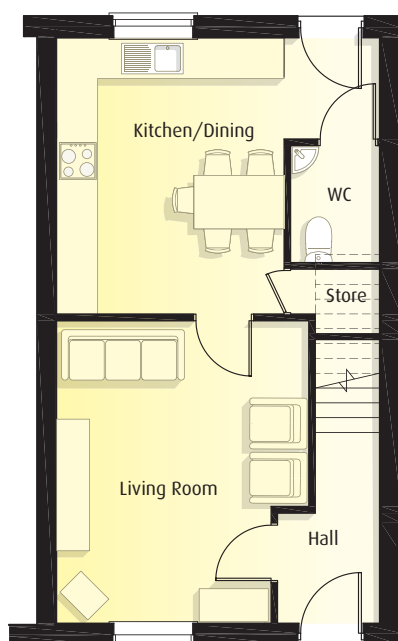
Bedroom 1	2.850m x 4.600m
Bedroom 2	2.705m x 4.200m
Bedroom 3	2.055m x 2.975m
Bathroom	2.100m x 2.125m

DISCLAIMER

Helena Living maintains a policy of continuous improvement. As a result, all information including internal layouts, images, build materials and specification is included as a guide only and is correct at the time of going to press. The company reserves the right to alter any of the information included at any time as it sees fit and without notice. This does not constitute or form any part of a contract or sale. Please contact Helena Living for the most up to date information on properties available at this development.

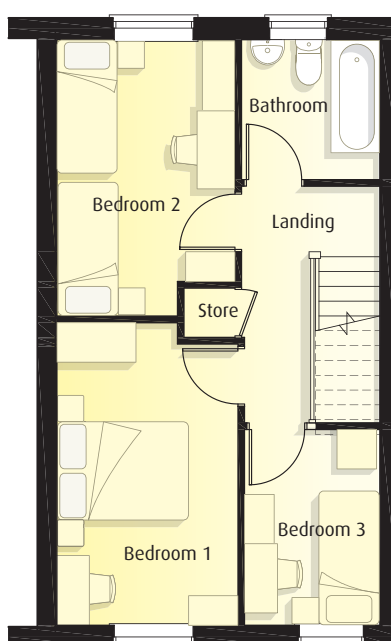


The Ribble • Plots 54-65, 69-76 & 87-92



Ground Floor

Living Room	3.830m x 4.600m
Kitchen/Dining Room	3.455m x 4.200m
WC	1.350m x 1.775m



First Floor

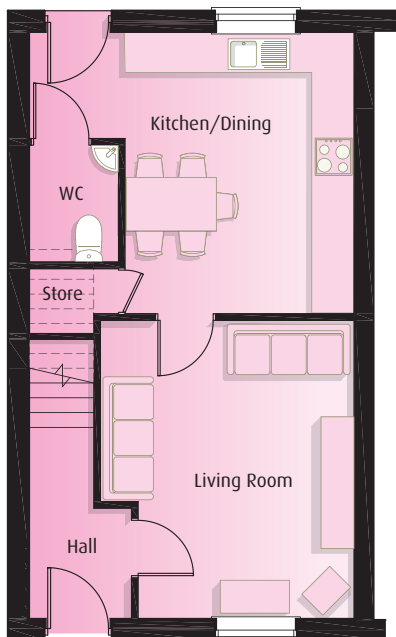
Bedroom 1	2.750m x 4.600m
Bedroom 2	2.705m x 4.200m
Bedroom 3	2.055m x 2.975m
Bathroom	2.100m x 2.125m

DISCLAIMER

Helena Living maintains a policy of continuous improvement. As a result, all information including internal layouts, images, build materials and specification is included as a guide only and is correct at the time of going to press. The company reserves the right to alter any of the information included at any time as it sees fit and without notice. This does not constitute or form any part of a contract or sale. Please contact Helena Living for the most up to date information on properties available at this development.

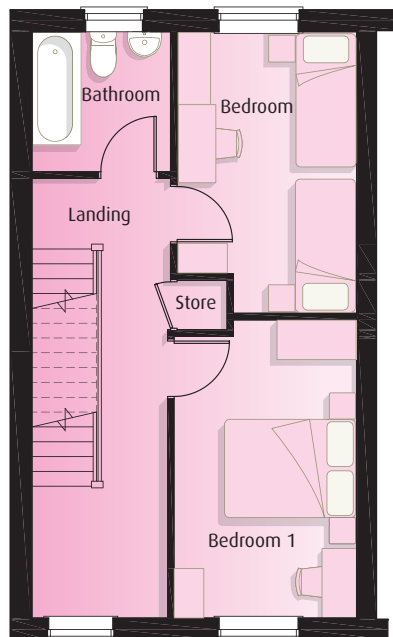


The Wye • Plots 66-68 & 85-86



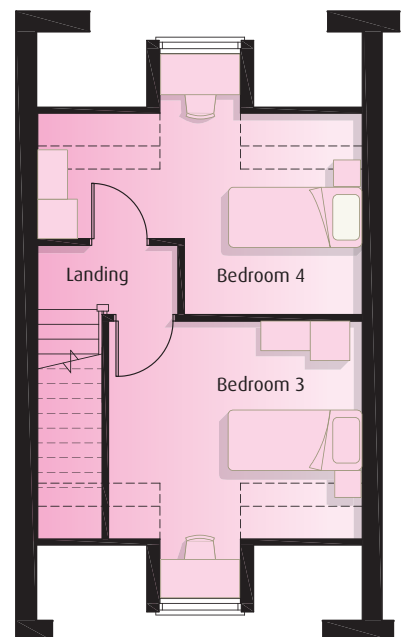
Ground Floor

Living Room	3.850m x 4.525m
Kitchen/Dining Room	3.475m x 4.273m
WC	1.350m x 1.775m



First Floor

Bedroom 1	2.770m x 4.525m
Bedroom 2	2.725m x 4.273m
Bathroom	2.100m x 2.125m



Second Floor

Bedroom 3	3.850m x 3.460m
Bedroom 4	4.925m x 2.910m

DISCLAIMER

Helena Living maintains a policy of continuous improvement. As a result, all information including internal layouts, images, build materials and specification is included as a guide only and is correct at the time of going to press. The company reserves the right to alter any of the information included at any time as it sees fit and without notice.
This does not constitute or form any part of a contract or sale. Please contact Helena Living for the most up to date information on properties available at this development.