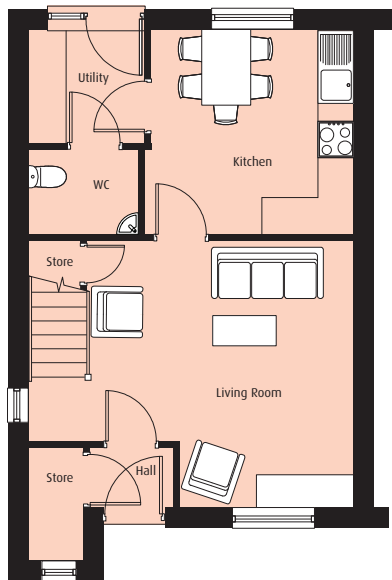


# Treetops

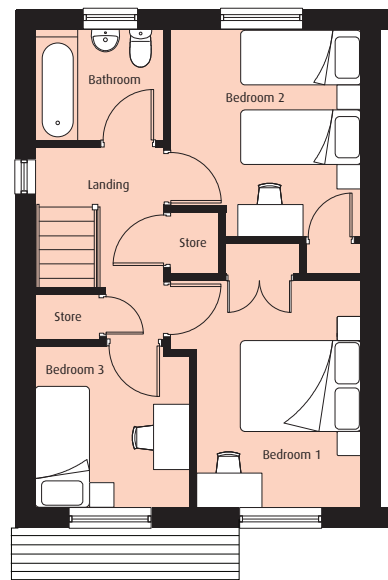


# Maple



## Ground Floor

Living Room	4.4m x 4.45m	14'5" x 14'7"
Kitchen/Dining	3.4 x 3.4m	11'1" x 11'1"
WC	1.4m x 1.85m	4'7" x 6'1"



## First Floor

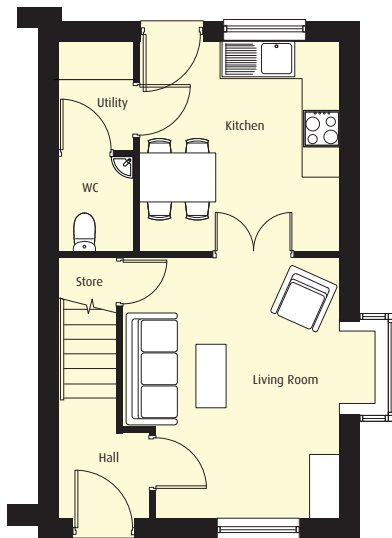
Bedroom 1	3.75m x 2.75m	12'3" x 9'0"
Bedroom 2	3.2m x 3.45m	10'6" x 11'4"
Bedroom 3	2.65m x 2.5m	8'8" x 8'2"
Bathroom	2.15m x 1.8m	7'1" x 5'11"



### DISCLAIMER

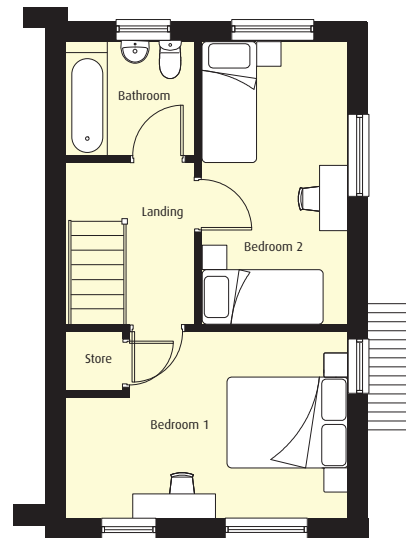
Helena Living maintains a policy of continuous improvement. As a result, all information including internal layouts, images, build materials and specification is included as a guide only and is correct at the time of going to press. The company reserves the right to alter any of the information included at any time as it sees fit and without notice. This does not constitute or form any part of a contract or sale. Please contact Helena Living for the most up to date information on properties available at this development.

# Holly



## Ground Floor

Living Room	3.55m x 4.3m	11'7" x 14'1"
Kitchen/Dining	3.25m x 3.45m	10'8" x 11'4"
WC	1.55m x 1.25m	5'1" x 4'1"



## First Floor

Bedroom 1	3.1m x 4.63m	10'2" x 15'2"
Bedroom 2	2.48m max x 4.7m	8'1" max x 15'5"
Bathroom	2.1m x 1.9m	6'10" x 6'3"

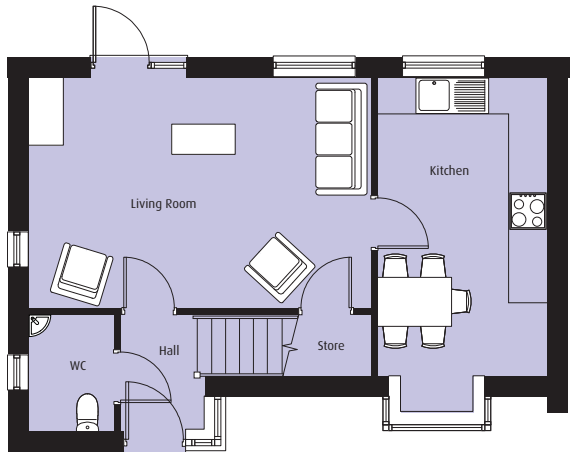


### DISCLAIMER

Helena Living maintains a policy of continuous improvement. As a result, all information including internal layouts, images, build materials and specification is included as a guide only and is correct at the time of going to press. The company reserves the right to alter any of the information included at any time as it sees fit and without notice. This does not constitute or form any part of a contract or sale. Please contact Helena Living for the most up to date information on properties available at this development.

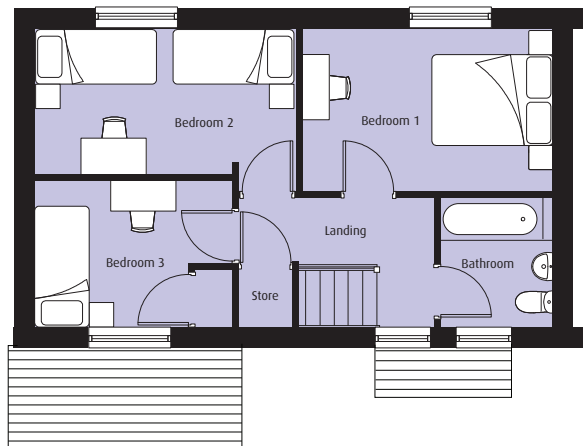


# Sycamore



## Ground Floor

Living Room	5.7m x 3.85m	18'8" x 12'7"
Kitchen/Dining	2.8m x 5m	9'2" x 16'4"
WC	1.45m x 1.9m	4'9" x 6'3"



## First Floor

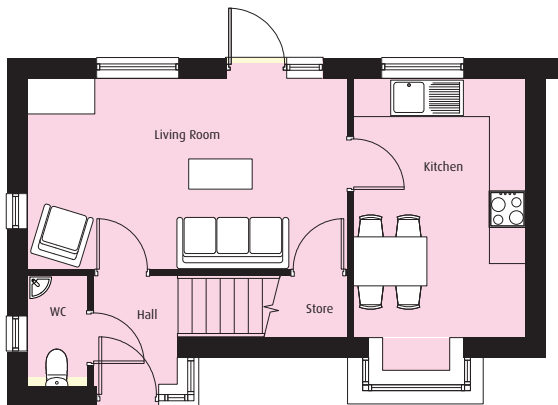
Bedroom 1	4.1m x 2.7m	13'5" x 8'10"
Bedroom 2	4.3m x 2.4m	14'1" x 7'10"
Bedroom 3	2.4m x 3.3m	7'10" x 10'10"
Bathroom	1.85m x 2.15m	6'1" x 7'0"



## DISCLAIMER

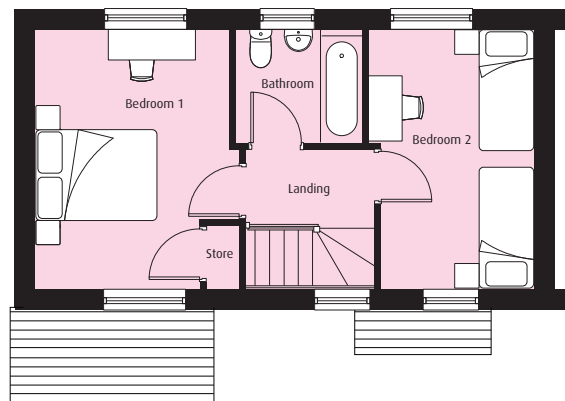
Helena Living maintains a policy of continuous improvement. As a result, all information including internal layouts, images, build materials and specification is included as a guide only and is correct at the time of going to press. The company reserves the right to alter any of the information included at any time as it sees fit and without notice. This does not constitute or form any part of a contract or sale. Please contact Helena Living for the most up to date information on properties available at this development.

# Hawthorne



## Ground Floor

Living Room	5.27m x 3.15m	17'3" x 10'4"
Kitchen/Dining	2.87m x 4.3m	9'5" x 14'1"
WC	0.98m x 1.8m	3'2" x 5'11"



## First Floor

Bedroom 1	3.2m x 4.3m	10'6" x 14'1"
Bedroom 2	2.75m max x 4.3m	9'0" max x 14'1"
Bathroom	2.1m x 1.87m	6'10" x 6'1"



## DISCLAIMER

Helena Living maintains a policy of continuous improvement. As a result, all information including internal layouts, images, build materials and specification is included as a guide only and is correct at the time of going to press. The company reserves the right to alter any of the information included at any time as it sees fit and without notice. This does not constitute or form any part of a contract or sale. Please contact Helena Living for the most up to date information on properties available at this development.